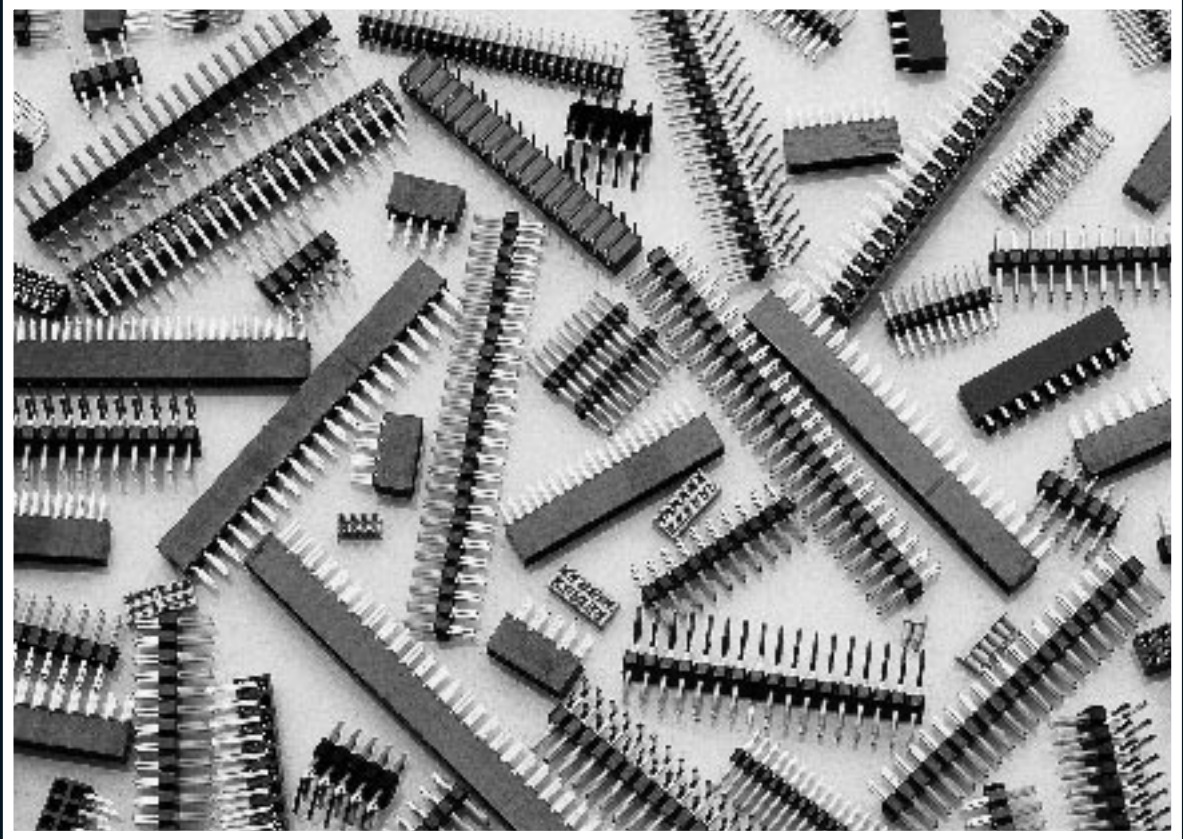


# ELCO

A Division Of AVX Corporation



**Torson .050"  
Connectors**

## .050" Receptacles

	Page #
Standard Profile Through-Hole/Surface Mount . . . . .	1
Low Profile Through-Hole/Surface Mount. . . . .	2

## .050" Headers

Standard Profile Through-Hole/Surface Mount . . . . .	3
Low Profile Through-Hole/Surface Mount. . . . .	4
Pin Carrier . . . . .	5
Stacking Header . . . . .	5

## Product Specifications

- Contact Stress** – 150K PSI min.
- Insertion Force** – 6 oz. max. (1.67 newtons)
- Withdrawal Force** – .75 oz. min. (.21 newtons)
- Contact Resistance** – 20 milliohms initial
- Dielectric Withstanding Voltage** – 1000 VAC
- Current Rating** – 1 amp max.
- Durability** – 50 cycles
- Operating Temperature** – -55°C to +105°C
- Insulation Resistance** – 1000 megohms min.
- Insulator Material** – High Temperature Thermoplastic
- Contact Material** – Copper Alloy
- Plating** – Gold (15µ min.) over nickel in the contact area  
Tin-lead (100-200µ) on the tail

# .050" Receptacles

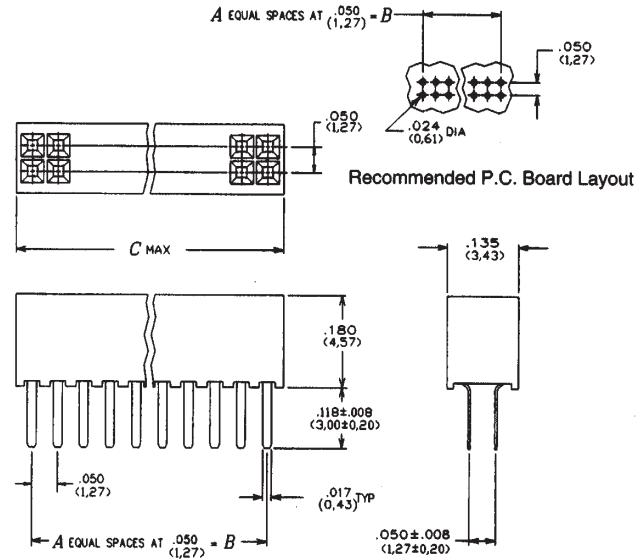
# SERIES 5016

## Standard Profile – Vertical

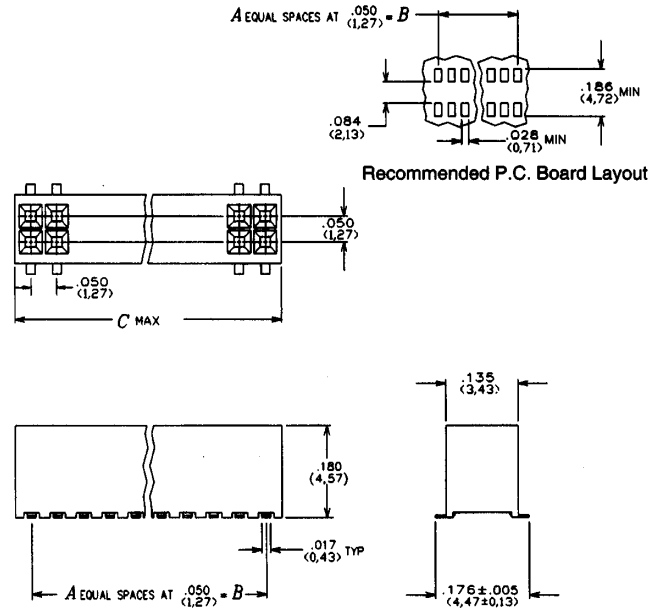
NUMBER OF POSITIONS	PART NUMBER	A	B	C
4	XX-5016-2004-10-001	1	0.50 (1.27)	.112 (2.84)
6	XX-5016-2006-10-001	2	.100 (2.54)	.162 (4.11)
8	XX-5016-2008-10-001	3	.150 (3.81)	.212 (5.38)
10	XX-5016-2010-10-001	4	.200 (5.08)	.262 (6.65)
12	XX-5016-2012-10-001	5	.250 (6.35)	.312 (7.92)
14	XX-5016-2014-10-001	6	.300 (7.62)	.362 (9.19)
16	XX-5016-2016-10-001	7	.350 (8.892)	.412 (10.46)
18	XX-5016-2018-10-001	8	.400 (10.16)	.462 (11.73)
20	XX-5016-2020-10-001	9	.450 (11.83)	.512 (13.00)
22	XX-5016-2022-10-001	10	.500 (12.70)	.562 (14.27)
24	XX-5016-2024-10-001	11	.550 (13.97)	.612 (15.54)
26	XX-5016-2026-10-001	12	.600 (15.24)	.662 (16.81)
28	XX-5016-2028-10-001	13	.650 (16.51)	.712 (18.08)
30	XX-5016-2030-10-001	14	.700 (17.78)	.762 (19.35)
32	XX-5016-2032-10-001	15	.750 (19.05)	.812 (20.62)
34	XX-5016-2034-10-001	16	.800 (20.32)	.862 (21.89)
36	XX-5016-2036-10-001	17	.850 (21.59)	.912 (23.16)
38	XX-5016-2038-10-001	18	.900 (22.86)	.962 (24.43)
40	XX-5016-2040-10-001	19	.950 (24.19)	1.012 (25.70)
42	XX-5016-2042-10-001	20	1.000 (25.408)	1.062 (26.97)
44	XX-5016-2044-10-001	21	1.050 (26.67)	1.112 (28.24)
46	XX-5016-2046-10-001	22	1.100 (27.94)	1.162 (29.51)
48	XX-5016-2048-10-001	23	1.150 (29.21)	1.212 (30.78)
50	XX-5016-2050-10-001	24	1.200 (30.48)	1.262 (32.05)

Contact factory for additional sizes.

### Through-Hole Mount



### Surface Mount



### Ordering Code



### Termination Style

- 20 - Through-Hole Mount
- 21 - Surface Mount

Total Number of Contacts (04-50)

# .050" Receptacles

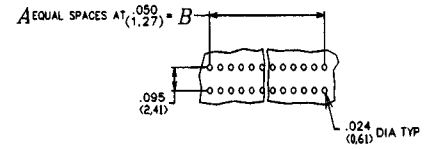
# SERIES 5016

Low Profile – Vertical

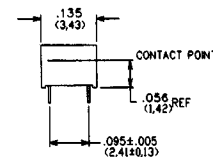
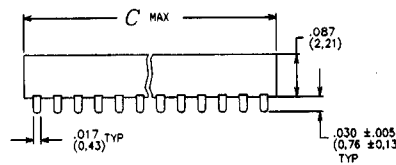
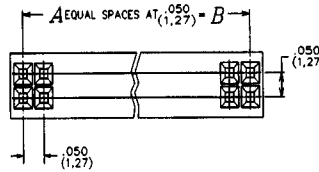
NUMBER OF POSITIONS	PART NUMBER	A	B	C
4	XX-5016-2002-10-001	1	0.50 (1.27)	.112 (2.84)
6	XX-5016-2003-10-001	2	.100 (2.54)	.162 (4.11)
8	XX-5016-2004-10-001	3	.150 (3.81)	.212 (5.38)
10	XX-5016-2005-10-001	4	.200 (5.08)	.262 (6.65)
12	XX-5016-2006-10-001	5	.250 (6.35)	.312 (7.92)
14	XX-5016-2007-10-001	6	.300 (7.62)	.362 (9.19)
16	XX-5016-2008-10-001	7	.350 (8.892)	.412 (10.46)
18	XX-5016-2009-10-001	8	.400 (10.16)	.462 (11.73)
20	XX-5016-2010-10-001	9	.450 (11.83)	.512 (13.00)
22	XX-5016-2011-10-001	10	.500 (12.70)	.562 (14.27)
24	XX-5016-2012-10-001	11	.550 (13.97)	.612 (15.54)
26	XX-5016-2013-10-001	12	.600 (15.24)	.662 (16.81)
28	XX-5016-2014-10-001	13	.650 (16.51)	.712 (18.08)
30	XX-5016-2015-10-001	14	.700 (17.78)	.762 (19.35)
32	XX-5016-2016-10-001	15	.750 (19.05)	.812 (20.62)
34	XX-5016-2017-10-001	16	.800 (20.32)	.862 (21.89)
36	XX-5016-2018-10-001	17	.850 (21.59)	.912 (23.16)
38	XX-5016-2019-10-001	18	.900 (22.86)	.962 (24.43)
40	XX-5016-2020-10-001	19	.950 (24.19)	1.012 (25.70)
42	XX-5016-2021-10-001	20	1.000 (25.408)	1.062 (26.97)
44	XX-5016-2022-10-001	21	1.050 (26.67)	1.112 (28.24)
46	XX-5016-2023-10-001	22	1.100 (27.94)	1.162 (29.51)
48	XX-5016-2024-10-001	23	1.150 (29.21)	1.212 (30.78)
50	XX-5016-2025-10-001	24	1.200 (30.48)	1.262 (32.05)

Contact factory for additional sizes.

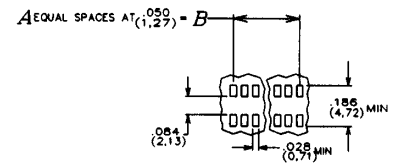
## Through-Hole Mount



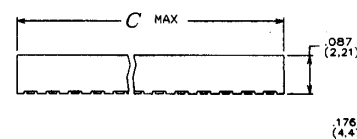
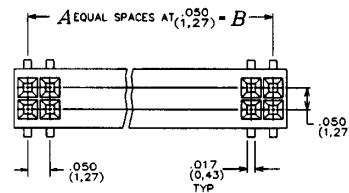
Recommended P.C. Board Layout



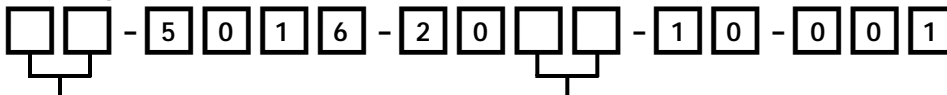
## Surface Mount



Recommended P.C. Board Layout



### Ordering Code



Termination Style  
 22 - Through-Hole Mount  
 23 - Surface Mount

Total Number of Contacts  
 Per Row  
 (02-25)

# .050" Headers

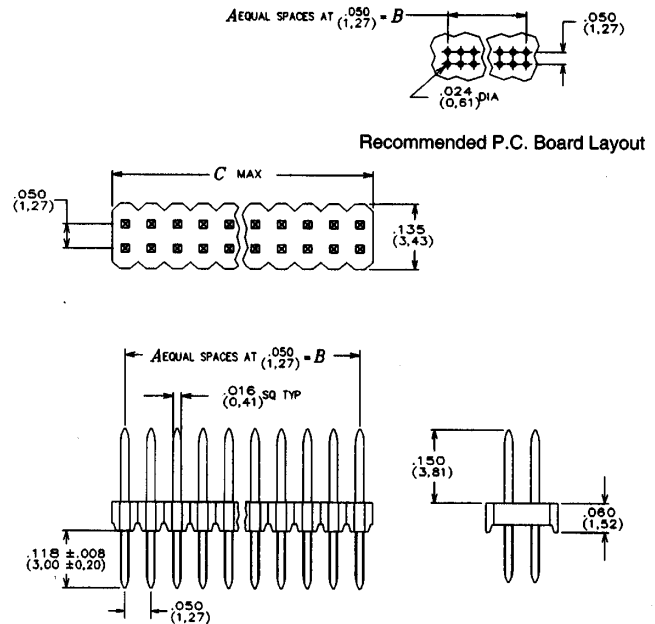
# SERIES 5016

## Standard Profile

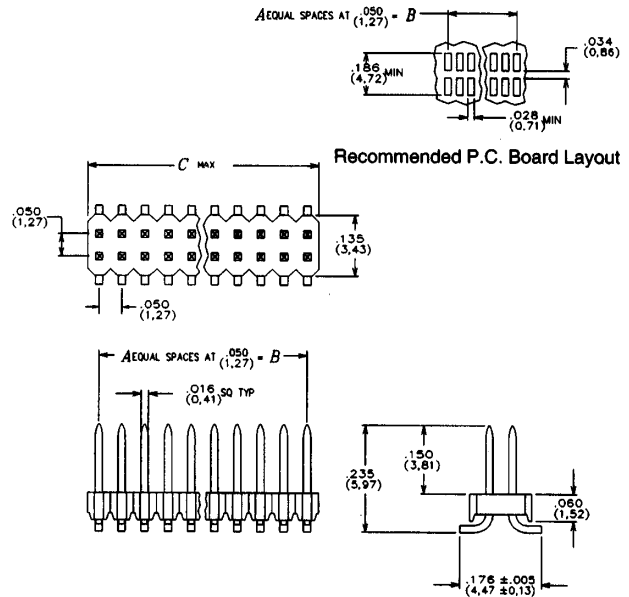
NUMBER OF POSITIONS	PART NUMBER	A	B	C
4	XX-5016-2004-10-001	1	0.50 (1,27)	.100 (2,54)
6	XX-5016-2006-10-001	2	.100 (2,54)	.150 (3,81)
8	XX-5016-2008-10-001	3	.150 (3,81)	.200 (5,08)
10	XX-5016-2010-10-001	4	.200 (5,08)	.250 (6,35)
12	XX-5016-2012-10-001	5	.250 (6,35)	.300 (7,62)
14	XX-5016-2014-10-001	6	.300 (7,62)	.350 (8,892)
16	XX-5016-2016-10-001	7	.350 (8,892)	.400 (10,16)
18	XX-5016-2018-10-001	8	.400 (10,16)	.450 (11,83)
20	XX-5016-2020-10-001	9	.450 (11,83)	.500 (12,70)
22	XX-5016-2022-10-001	10	.500 (12,70)	.550 (13,97)
24	XX-5016-2024-10-001	11	.550 (13,97)	.600 (15,24)
26	XX-5016-2026-10-001	12	.600 (15,24)	.650 (16,51)
28	XX-5016-2028-10-001	13	.650 (16,51)	.700 (17,78)
30	XX-5016-2030-10-001	14	.700 (17,78)	.750 (19,05)
32	XX-5016-2032-10-001	15	.750 (19,05)	.800 (20,32)
34	XX-5016-2034-10-001	16	.800 (20,32)	.850 (21,59)
36	XX-5016-2036-10-001	17	.850 (21,59)	.900 (22,86)
38	XX-5016-2038-10-001	18	.900 (22,86)	.950 (24,19)
40	XX-5016-2040-10-001	19	.950 (24,19)	1.000 (25,40)
42	XX-5016-2042-10-001	20	1.000 (25,408)	1.050 (26,67)
44	XX-5016-2044-10-001	21	1.050 (26,67)	1.100 (27,94)
46	XX-5016-2046-10-001	22	1.100 (27,94)	1.150 (29,21)
48	XX-5016-2048-10-001	23	1.150 (29,21)	1.200 (30,48)
50	XX-5016-2050-10-001	24	1.200 (30,48)	1.250 (31,75)

Contact factory for additional sizes.

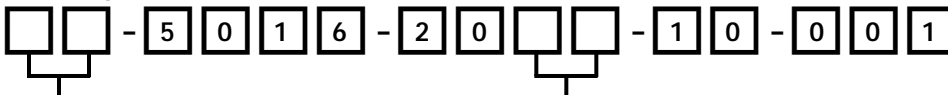
### Through-Hole Mount



### Surface Mount



### Ordering Code



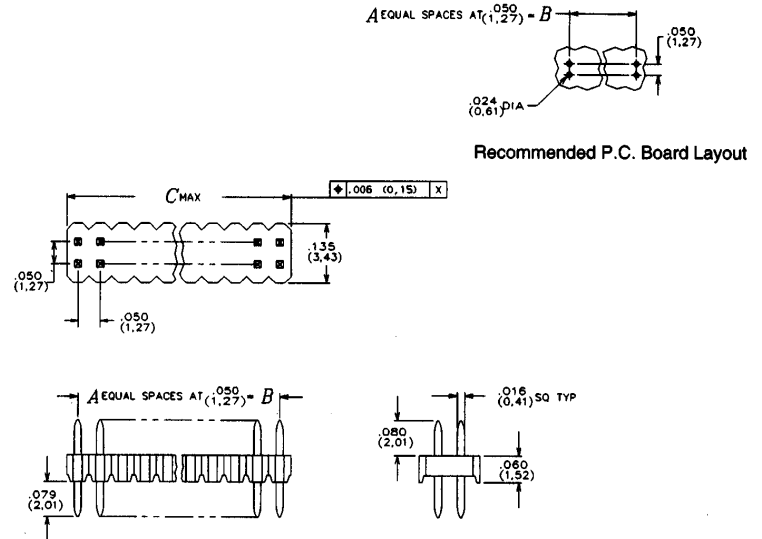
Termination Style  
 10 - Through-Hole Mount  
 11 - Surface Mount

Total Number of Contacts  
 (04-50)

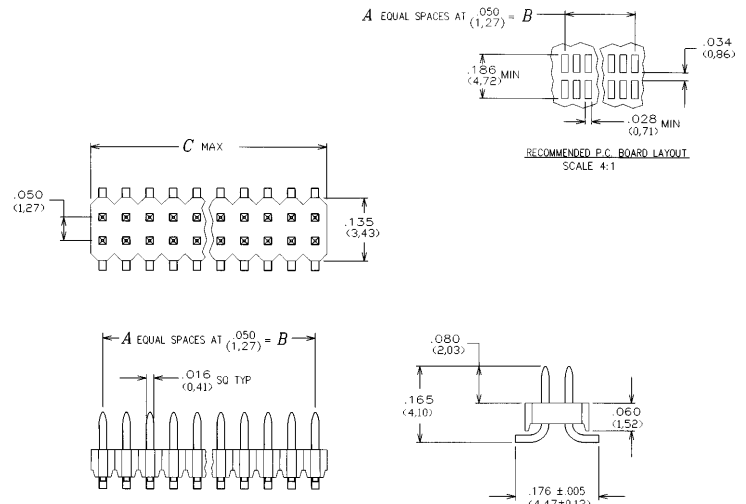
NUMBER OF POSITIONS	PART NUMBER	A	B	C
4	XX-5016-2002-10-001	1	.050 (1.27)	.100 (2.54)
6	XX-5016-2003-10-001	2	.100 (2.54)	.150 (3.81)
8	XX-5016-2004-10-001	3	.150 (3.81)	.200 (5.08)
10	XX-5016-2005-10-001	4	.200 (5.08)	.250 (6.35)
12	XX-5016-2006-10-001	5	.250 (6.35)	.300 (7.62)
14	XX-5016-2007-10-001	6	.300 (7.62)	.350 (8.892)
16	XX-5016-2008-10-001	7	.350 (8.892)	.400 (10.16)
18	XX-5016-2009-10-001	8	.400 (10.16)	.450 (11.43)
20	XX-5016-2010-10-001	9	.450 (11.43)	.500 (12.70)
22	XX-5016-2011-10-001	10	.500 (12.70)	.550 (13.97)
24	XX-5016-2012-10-001	11	.550 (13.97)	.600 (15.24)
26	XX-5016-2013-10-001	12	.600 (15.24)	.650 (16.51)
28	XX-5016-2014-10-001	13	.650 (16.51)	.700 (17.78)
30	XX-5016-2015-10-001	14	.700 (17.78)	.750 (19.05)
32	XX-5016-2016-10-001	15	.750 (19.05)	.800 (20.32)
34	XX-5016-2017-10-001	16	.800 (20.32)	.850 (21.59)
36	XX-5016-2018-10-001	17	.850 (21.59)	.900 (22.86)
38	XX-5016-2019-10-001	18	.900 (22.86)	.950 (24.13)
40	XX-5016-2020-10-001	19	.950 (24.13)	1.000 (25.40)
42	XX-5016-2021-10-001	20	1.000 (25.408)	1.050 (26.67)
44	XX-5016-2022-10-001	21	1.050 (26.67)	1.100 (27.94)
46	XX-5016-2023-10-001	22	1.100 (27.94)	1.150 (29.21)
48	XX-5016-2024-10-001	23	1.150 (29.21)	1.200 (30.48)
50	XX-5016-2025-10-001	24	1.200 (30.48)	1.250 (31.75)

Contact factory for additional sizes.

### Through-Hole Mount



### Surface Mount



### Ordering Code



Termination Style  
 12 - Through-Hole Mount  
 17 - Surface Mount

Number of Pins  
 Per Row

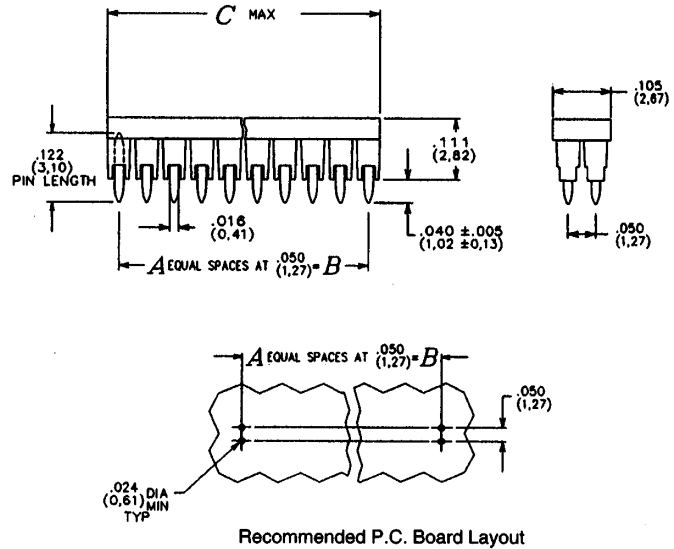
# .050" Headers

# SERIES 5016

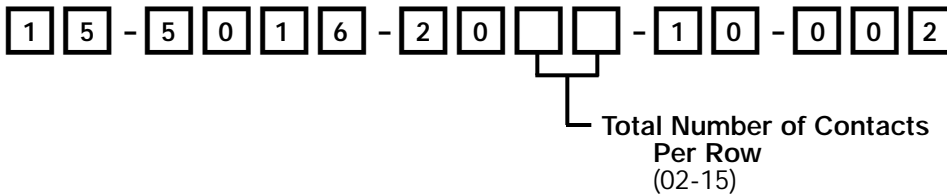
## Non-Standard Products

### Pin Carrier Header

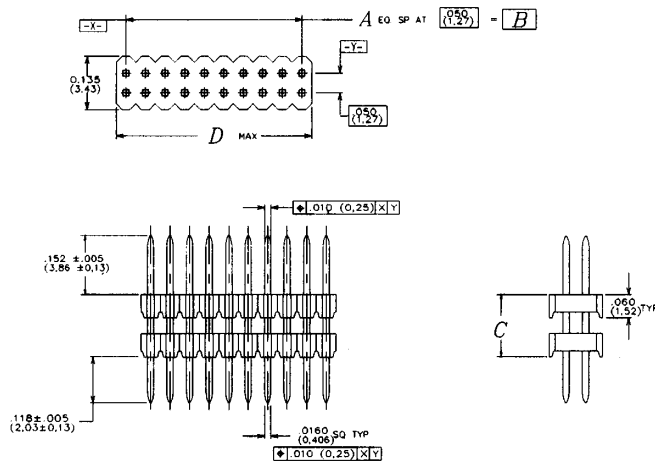
NUMBER OF POSITIONS	PART NUMBER	A	B	C
4	15-5016-2002-10-002	.100 (2,54)	.150 (3,81)	.200 (5,08)
6	15-5016-2003-10-002	.150 (3,81)	.200 (5,08)	.250 (6,35)
8	15-5016-2004-10-002	.200 (5,08)	.250 (6,35)	.300 (7,62)
10	15-5016-2005-10-002	.250 (6,35)	.300 (7,62)	.350 (8,892)
12	15-5016-2006-10-002	.300 (7,62)	.350 (8,892)	.400 (10,16)
14	15-5016-2007-10-002	.350 (8,892)	.400 (10,16)	.450 (11,43)
16	15-5016-2008-10-002	.400 (10,16)	.450 (11,43)	.500 (12,70)
18	15-5016-2009-10-002	.450 (11,43)	.500 (12,70)	.550 (13,97)
20	15-5016-2010-10-002	.500 (12,70)	.550 (13,97)	.600 (15,24)
22	15-5016-2011-10-002	.550 (13,97)	.600 (15,24)	.650 (16,51)
24	15-5016-2012-10-002	.600 (15,24)	.650 (16,51)	.700 (17,78)
26	15-5016-2013-10-002	.650 (16,51)	.700 (17,78)	.750 (19,05)
28	15-5016-2014-10-002	.700 (17,78)	.750 (19,05)	
30	15-5016-2015-10-002			



### Ordering Code



### Stacking Headers



Drawing shows design concept only. Please consult your Product Manager for specific customer requirements.

Please specify total number of contacts and board space (c) required.

## Worldwide Sales and Manufacturing Facilities

### U.S.A.

**Elco Corporation**  
801 17th Avenue South  
P.O. Box 867  
Myrtle Beach, SC 29577  
U.S.A.  
Tel. 803-448-9411  
FAX 803-626-5814

### Europe

**GERMANY**  
**Elco Europe, GmbH**  
European Headquarters  
Benjamin-Fox-Strasse 1  
57518 Betzdorf  
Germany  
Tel. 49-2741-2990  
FAX 49-2741-299299

**UNITED KINGDOM**  
**Elco Europe, Ltd.**  
Exning Road  
P.O. Box 19  
Newmarket, Suffolk  
England, CB8 0BB  
Tel. 44-1-638-664514  
FAX 44-1-638-661233  
Telex 81519

### Asia Pacific

**JAPAN**  
**Kyocera Elco Corporation**  
1-1 Kagahara 2-chome Tsuzuki-Ku  
Yokohama 224, Japan  
Tel. 045-943-2907  
FAX 045-943-2910

**KOREA**  
**Elco Korea, Ltd.**  
60-44 Garibong-Dong  
Kuro-ku, Seoul, Korea 152-020  
Tel. 011-82-2-869-8011-3  
FAX 011-82-2-837-1936

**SINGAPORE**  
**AVX/Kyocera (Singapore) Pte. Ltd.**  
39A Jalan Pemimpin #07-00  
#03-00 Tal Building  
Singapore 2057  
Tel. 65-258-2833  
FAX 65-258-8221

**HONG KONG**  
**AVX/Kyocera Asia, Ltd.**  
3/F., Hilder Centre  
2 Sung Ping St., Hunghom  
Kowloon, Hong Kong  
Tel. 852-363-3303  
FAX 852-765-8185

# ELCO

## World Class Connections