



# Series 516 Zero Insertion Force Socket

## FEATURES:

- A choice of 24, 28, or 40 pin count devices can be inserted without bending or otherwise damaging the legs, since no force is required to either insert or remove the component from the socket.
- Contacts are normally open and are closed by a unique cam action controlled by dual lever arms.
- The last 15° of movement of the cam provides a wiping action to the contacts on the legs of the device to remove any residue, ensuring a gas-tight seal.
- Tapered entry guides help guide the device legs into the mating position with the contacts.

## SPECIFICATIONS:

- Body, handle, and cam are blue UL 94V-0 Glass-filled Polyester Thermoplastic.
- Pins are Beryllium Copper 170 or 172, 1/2 hard.
- Pin plating is either 50µ [ 1.27µm] min. Tin per MIL-T-10727 or 10µ [.25µm] min. Gold per MIL-G-45204 over 50µ [1.27µm] min. Nickel per QQ-N-290.
- Contact current rating=1 Amp.
- Operating temperature: 221°F [105°C] Tin plating, 257°F [125°C] Gold plating.
- Minimum Retention Force (when closed)=15 grams/lead, based on a .008 [.20] thick test lead.
- Accepts most lead widths with lengths from .075 to .250 [1.91 to 6.35].

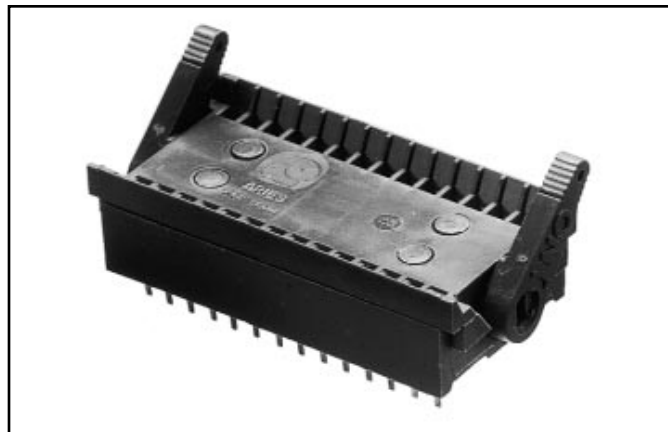
## MOUNTING CONSIDERATIONS:

- Suggested PCB hole size=.035 ± .002 [.89 ± .05] dia.

**ALL DIMENSIONS: INCHES [MILLIMETERS]**

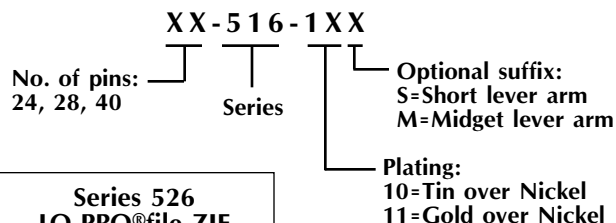
"A"=(NO. OF PINS PER ROW X .100 [2.54]) + .220 [5.59]

"B"=(NO. OF PINS PER ROW - 1) X .100 [2.54]

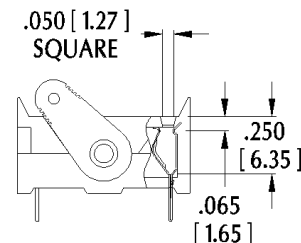
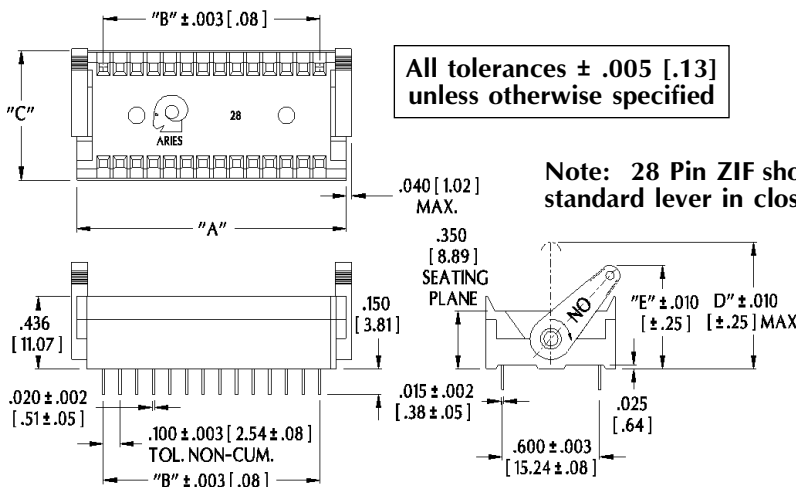


Note: Aries specializes in custom design and production. In addition to the standard products shown on this page, special materials, platings, sizes, and configurations can be furnished, depending on quantities. Aries reserves the right to change product specifications without notice.

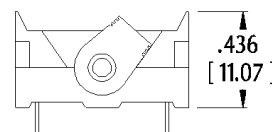
## ORDERING INFORMATION



Series 526  
LO-PRO®file ZIF  
Socket also available.  
Consult Data Sheet  
No. 10018.



**SHORT LEVER ARM**  
(open position)



**MIDGET LEVER ARM**  
(closed position)

No. of Pins	Dim. "C"	Standard Lever Arm		Short Lever Arm		Midget Lever Arm	
		Dim. "D"	Dim. "E"	Dim. "D"	Dim. "E"	Dim. "D"	Dim. "E"
24	.785 [19.94]	.76 [19.3]	.63 [16.0]	.60 [15.2]	.52 [13.2]	.41 [10.4]	.42 [10.7]
28	.785 [19.94]	.76 [19.3]	.63 [16.0]	.60 [15.2]	.52 [13.2]	.41 [10.4]	.42 [10.7]
40	.780 [9.81]	.76 [19.3]	.63 [16.0]	.60 [15.2]	.52 [13.2]	.41 [10.4]	.42 [10.7]



**ARIES**  
ELECTRONICS, INC.

http://www.arieselec.com • info@arieselec.com

NORTH AMERICA  
Frenchtown, NJ USA  
TEL: (908) 996-6841  
FAX: (908) 996-3891

UK/SCANDINAVIA/IRELAND  
Milton Keynes, GB  
TEL: +44 1908 260007  
FAX: +44 1908 260008

EUROPE (MAINLAND)  
Papendrecht, Holland  
TEL: +31 78 615 94 65  
FAX: +31 78 615 43 11

10017  
REV.A